

Home Designs by Bruno

See Me Before You Build

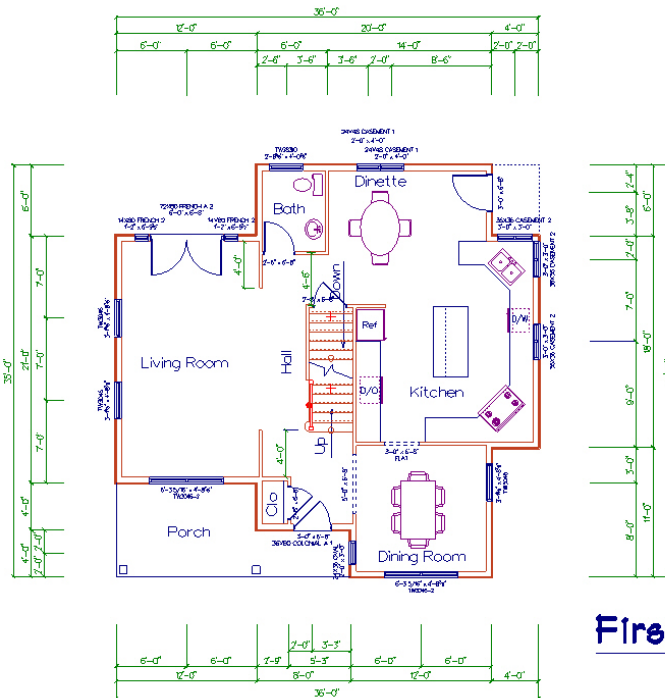
HDBB0411001

Affordable Living

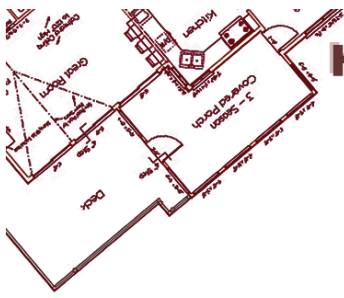
2,042 SQ Ft
3 Bedrooms
2 ½ Baths



Front Elevation View



First Floor Plan



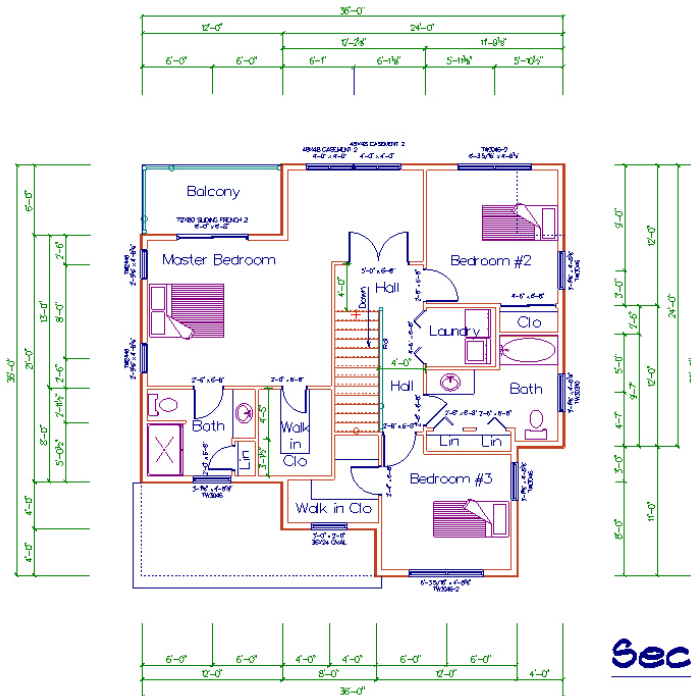
Home Designs by Bruno

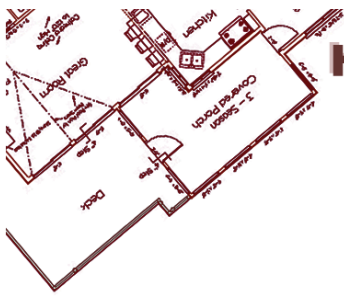
See Me Before You Build

HDBB0411001



Rear Elevation View





Home Designs by Bruno

See Me Before You Build

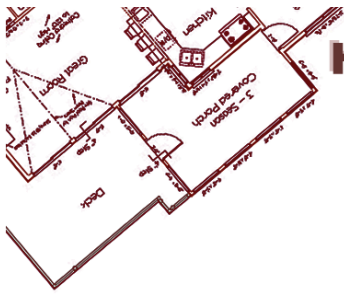
HDBB0411001



Left Side Elevation View



Rear Elevation View



Home Designs by Bruno

See Me Before You Build

HDBB0411001

First Floor: 1,009 sq ft.

Second Floor: 1,033 sq ft.

Total: 2,042 sq ft

Bedrooms: 3

Bathrooms: 2 ½

Garage: None

Width: 35 ft.

Length: 36 ft.

Scale: ¼"

Special Features:

- Large Kitchen
- Rear Covered Porch
- Front Covered Porch
- Master Bedroom Exterior Balcony
- We will modify the interior room sizes for FREE just ask. Also, contact us for your custom design.

You Receive:

- Six sets of 36"x24" Prints
- Exterior Elevations
- Floor plans for each Living Level and Garage
- Stair Cross sections, Details & Specifications
- Foundation Plan
- Window Schedule, General Section & Specifications
- Roof Plan
- RESCheck – Energy audit
- Hurricane wind calculation